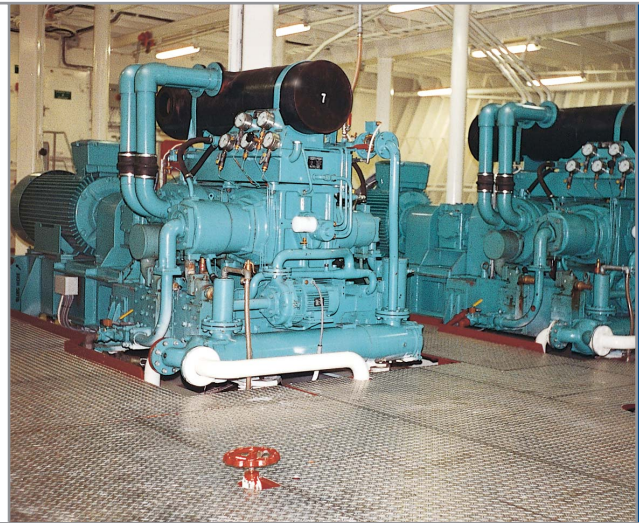


425E* & 425D*

Medium and High Pressure Air Compressors. 100mm Series

Capacities: 160 - 678 m³/h (95 - 400 cfm)
Pressures: 100 - 400 bar (1400 - 5800 psig)



Hamworthy 100mm series medium and high pressure water cooled compressors are three or four stage, two crank, water cooled, dry sump pressure lubricated machines. Designed for land and marine applications involving the supply of air or gas at high pressure. Suitable for **electric*** motor or **diesel*** engine drives.

Standard Features

- ▶ Air pressure gauge and safety valve for each stage
- ▶ Oil pressure gauge and relief valve
- ▶ Suction filter and silencer
- ▶ Cooler drain valves
- ▶ Integral interstage and after coolers
- ▶ High efficiency low lift concentric valves at each stage
- ▶ Fusible plugs for high temperature protection
- ▶ Air coolers and water inlet and outlet temperatures via thermometers
- ▶ Air delivery non-return valve
- ▶ Separator column
- ▶ Automatic cooler drainage and unloading systems
- ▶ Stainless steel lubricating oil tank with condensate management system
- ▶ High air temperature switch
- ▶ Low lubricating oil pressure switch
- ▶ Anti vibration mounting system
- ▶ Flexible hoses for all terminal points
- ▶ Integral SW/FW tube heat exchanger with thermostatic control valve
- ▶ Cooling water flow switch

Optional Features

- ▶ Containerisation
- ▶ System air pressure switch
- ▶ Electrical starter/controller
- ▶ Multi compressor installation control system

Drives and Mountings

Machines are suitable for direct or belt drive. Electric motors are arranged in line with the unit to direct drive the machine or through a gearbox (50Hz supply) in a compact modular assembly. Engine or electric motor driven machines are assembled as a single combined unit with all drive systems adequately guarded and all units have full protection devices for safe operation.

Classification

Units are tested as a fully assembled machine with the specified control system as complete, ready for installation units. Marine classification survey and inspection available when specified.

Containerisation

Two electric driven units can be supplied in a single 20 ft. ISO CSC plated containers with storage reservoirs and condensate management systems. Engineered for offshore or harsh marine environments. Ambient conditions from 0°C to +45°C.

425E & 425D Seismic Air Compressors

Specification

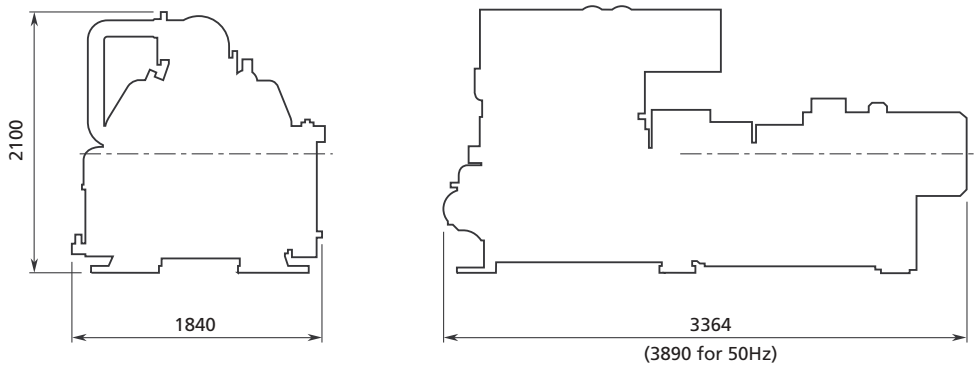
Compressor Type	Capacity		Pressure		Absorbed Power
	m ³ /h	cfm	bar	psig	(kW)
4TH 565	750 - 678	444 - 400	100 - 350	1450 - 5000	197 - 232
4TH 430	479 - 433	284 - 256	100 - 400	1450 - 5800	126 - 158
4TH 275	368 - 277	218 - 164	100 - 400	1450 - 5800	97 - 121

Capacities shown are free air delivered at constant pressure

Speed Range: 60 - 1200 rev/min

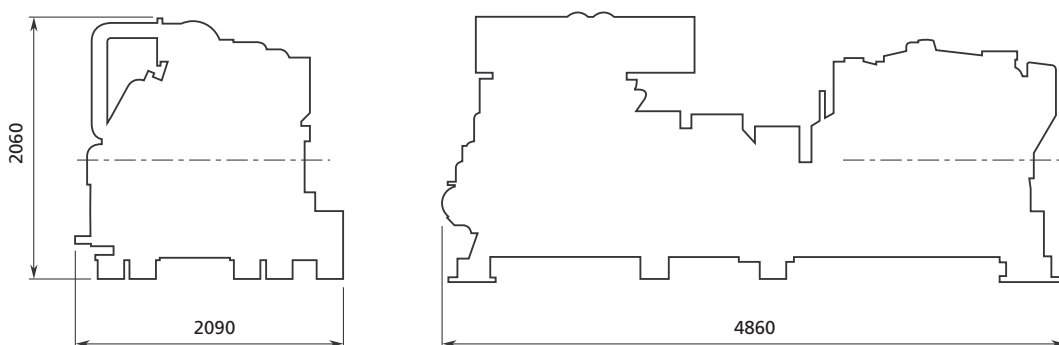
Typical model **425 E** electric driven compressor (Dimensions mm)

Wet Weight: 5240kg



Typical model **425 D** diesel driven compressor (Dimensions mm)

Wet Weight: 7960kg



Hamworthy Water Systems Limited
 Fleets Corner, Poole, Dorset BH17 0JT. England.
 tel: +44(0)1202 662600. fax: +44(0)1202 668793.
 e-mail: info@hamworthy.com
 website: www.hamworthy.com/wastesystems

a subsidiary of Hamworthy plc



The manufacturers reserve the right to alter the specification and data to incorporate improvements in design. Certified drawings will be issued on request.

© All details copyright Hamworthy plc.